



# FOX HILL GOLF CLUB

## LANDSCAPE CONCEPT DESIGN REPORT

### PREPARED FOR SITE COMPATIBILITY CERTIFICATE

Prepared by Site Image Landscape Architects

With Altis Architects

For Integrated Projects Pty Ltd

16 March 2021



Integrated **Projects**

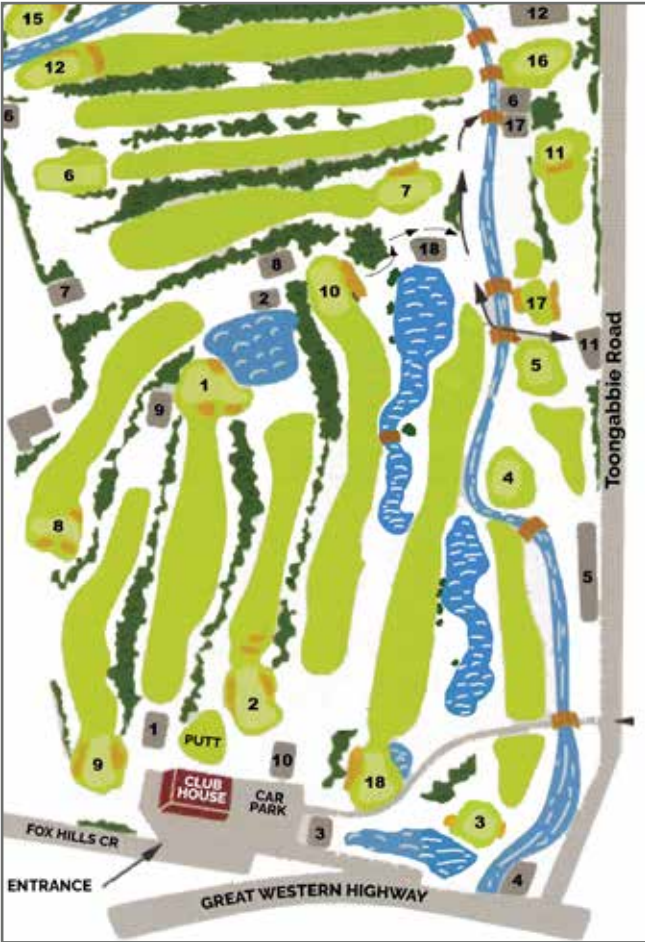
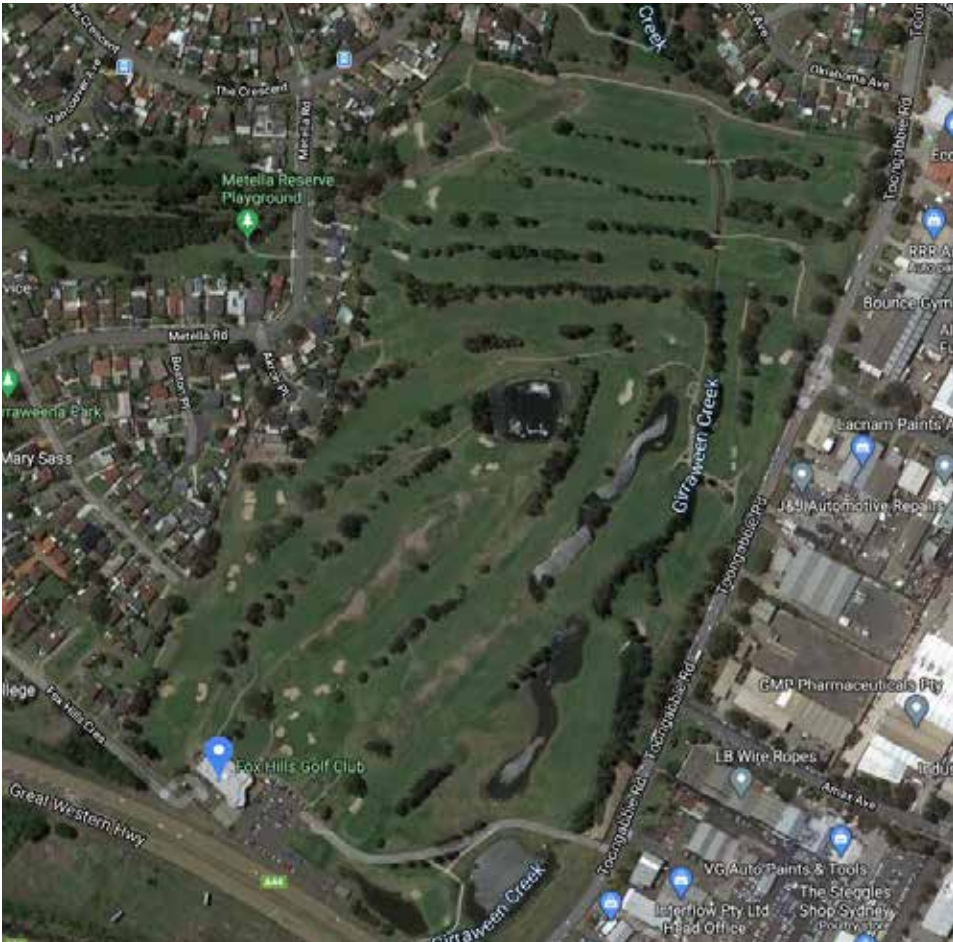


SITE IMAGE  
Landscape Architects



SITE AND CONTEXT

Fox Hills Golf Club is located 7km from Parramatta CBD easy access from the M4, M7 and Great Western Highway. It has club facilities and a 18 hole golf course with practice putting and chipping greens. There are numerous lakes across the site with water used for irrigation of the golf course and for extensive trees that provide scenic outlook across the course to a series of fairway edge and site boundary tree groves. The Great Western Highway provides views to the golf course from the south, with commercial / warehouse type landuses to the east, and residential housing areas to the west and northern boundaries.



Integrated Projects



SITE IMAGE  
Landscape Architects

Fox Hills Golf Club  
Landscape Concept

Client:  
Architect / Urban Planner  
Site Image Job Number:

Fox Hills Golf Club  
Altis Architecture  
SS20-4515

Drawing Number:  
Issue:  
Date: 16.03.2021



SITE LANDSCAPE PHOTOS



Integrated Projects



Fox Hills Golf Club  
Landscape Concept

Client:  
Architect / Urban Planner  
Site Image Job Number:

Fox Hills Golf Club  
Altis Architecture  
SS20-4515

Drawing Number:  
Issue:  
Date: 16.03.2021



LANDSCAPE MASTERPLAN

BOUNDARY SCREENING AND  
CANOPY TREES

DRIVEWAYS TO BASEMENT PARKING  
WITH VISITOR PARKING TO ROADSIDE

BOUNDARY TREES AND GENEROUS  
PERIMETER LAWNS / OPEN SPACE

ACCESS ROADWAY WITH AVENUE  
TREES AND ALLIED WALKWAYS

COMMUNAL GARDENS WITH VEGETABLE  
GARDENS, LAWN, PERGOLA

LOOP WALKWAY TO SITE PERIMETER  
WITH LINKS TO CENTRAL WALKWAYS

SECONDARY ACCESS - FOR RESIDENTS  
ONLY, SECURED WITH A BOOM-GATE

SUITABLE OUTDOOR GATHERING /  
ACTIVITY AREAS FOR AGED CARE

BOUNDARY SCREENING AND  
CANOPY TREES

SITE ENTRY ROAD AVENUE TREE  
PLANTING FOR COLOUR / SHADE

CARPARK ENTRY ADJUSTED TO INTEGRATE  
WITH UPGRADED ENTRY ROAD

CANOPY TREES AND GREENING OF  
GOLF COURSE EDGE

'DUCK POND' AS DESTINATION AREA  
FOR LINEAR / LOOP WALKWAYS

COMMUNAL GARDENS WITH  
OUTDOOR GYM, LAWN, PERGOLA

INDEPENDENT LIVING APARTMENTS  
WITH EXTENSIVE LANDSCAPE SETTING

COMMUNAL GARDENS WITH VEGETABLE  
GARDENS, LAWN, PERGOLA

STREET ADDRESS / SETDOWN FOR  
GOLF FRONTAGE APARTMENTS

LOOP WALKWAY TO SITE PERIMETER  
WITH LINKS TO CENTRAL WALKWAYS

COMMUNAL GARDENS WITH CRAFT /  
ACTIVITY SHED, LAWNS, PERGOLA

BOWLING GREENS AS ADDITIONAL  
FACILITY

NEW INDOOR POOL AND GYM AND  
BREAKOUT ACTIVE LAWNS

UPGRADED BUILDING - REFER TO  
ARCHITECTS DOCUMENTS



Integrated Projects



SITE IMAGE  
Landscape Architects

Fox Hills Golf Club  
Landscape Concept

Client:  
Architect / Urban Planner  
Site Image Job Number:

Fox Hills Golf Club  
Altis Architecture  
SS20-4515

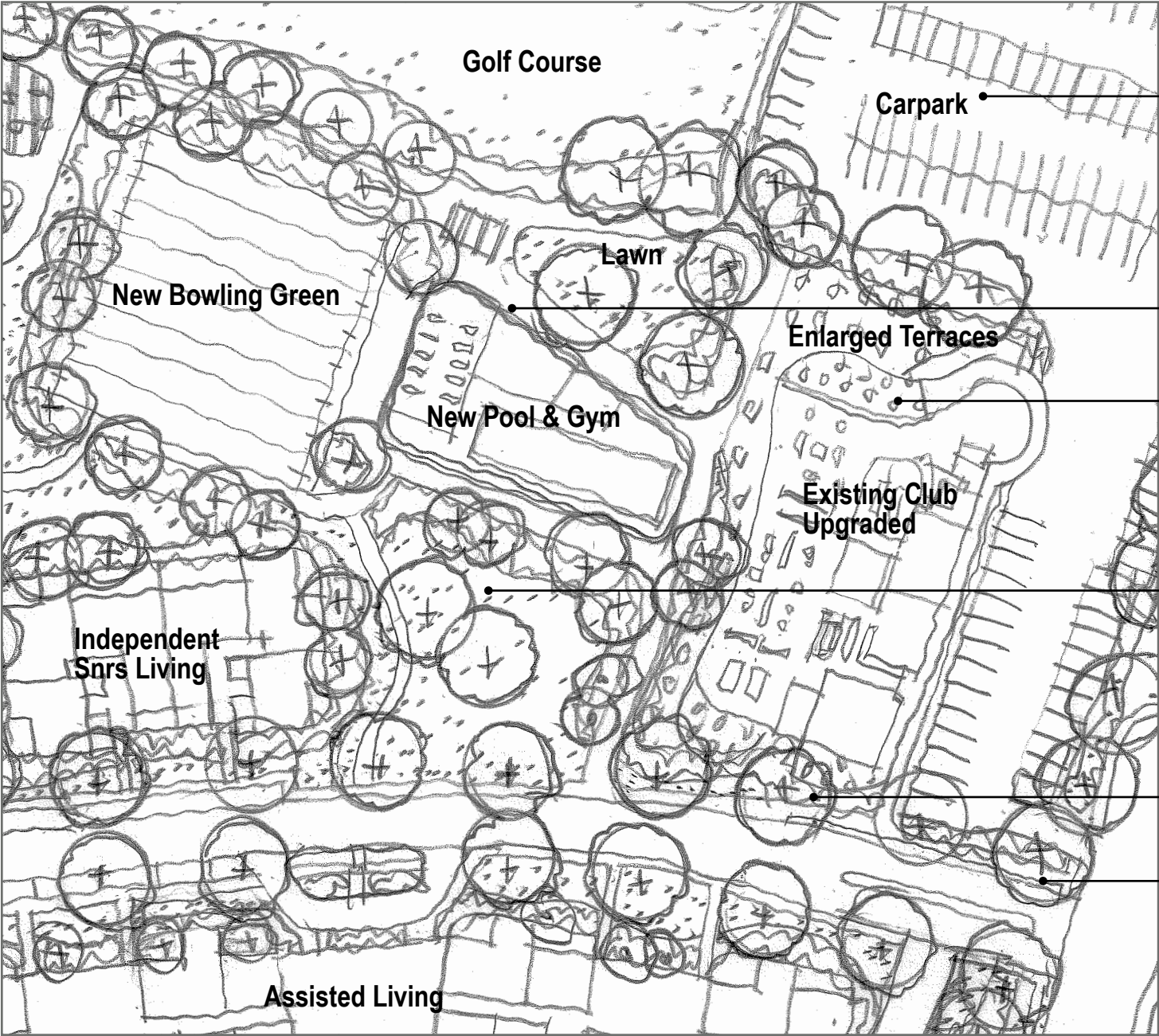
Drawing Number:  
Issue:  
Date:



# 1. Southern Site Entry and Clubhouse Access



The clubhouse is to be upgraded, including carpark improvement, increased outdoor terraces, and adjusted golf course access. A new pool pavilion and gym has a broad outdoor lawn overlooking the golf course. A new bowling green to the north contributes to a comprehensive amenity precinct.



Precinct plan

- Minor adjustments to parking area to incorporate building adjustments
- Bowling Green and Pool / Gym Pavilion overlook the golf course
- Significantly improved outdoor terraces to the club enjoy outdoor vistas
- Park area provides a landscape setting to the upgraded clubhouse
- Avenue of broad canopy trees along entry road
- Upgrade existing site entry



Design Imagery



Integrated Projects



Fox Hills Golf Club  
Landscape Concept

Client:  
Architect / Urban Planner  
Site Image Job Number:

Fox Hills Golf Club  
Altis Architecture  
SS20-4515

Drawing Number:  
Issue:  
Date: 16.03.2021

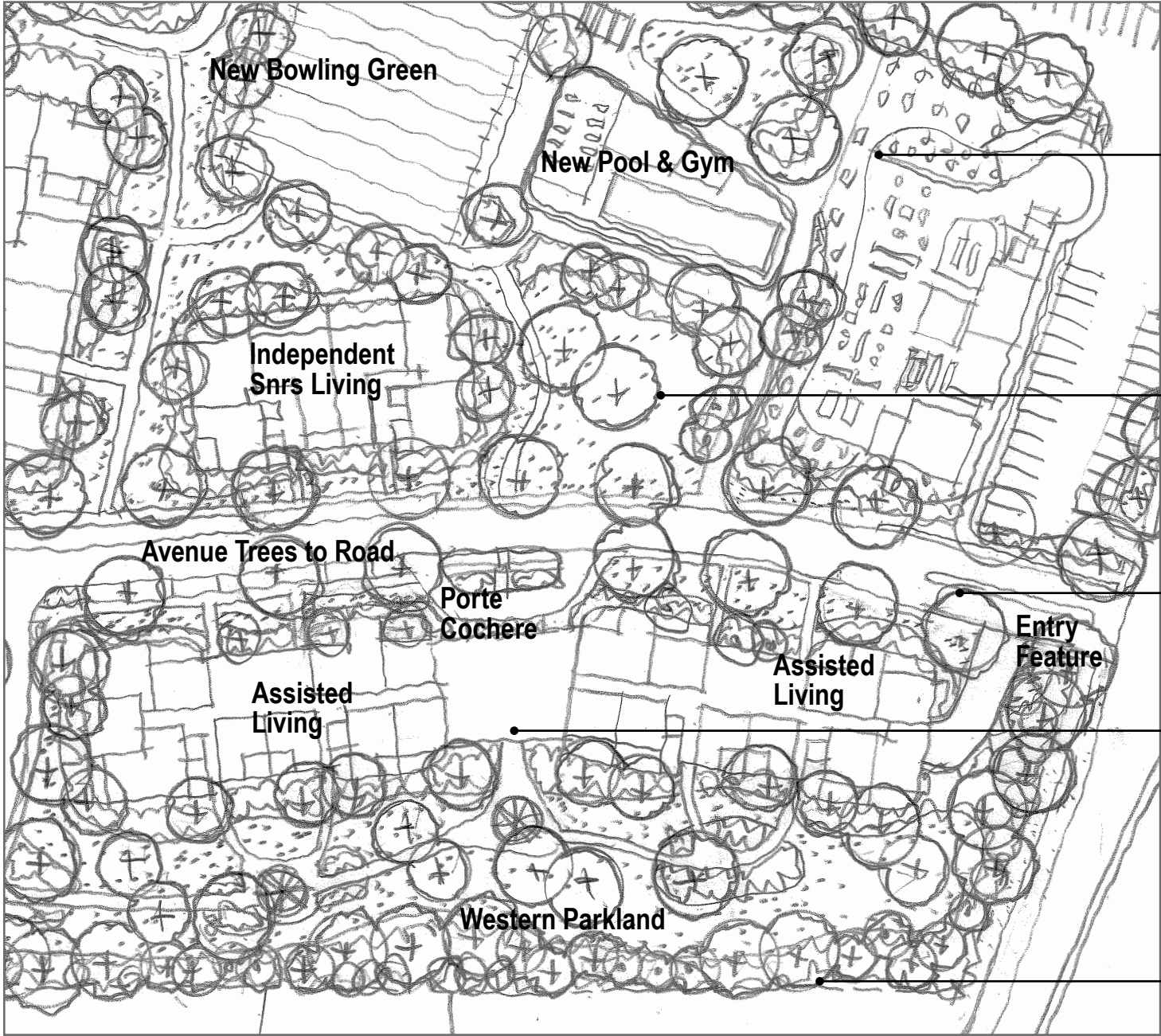


2. Assisted Living Residential



Consistent with the principle of ‘aging in place’ the provision of Assisted Living residential on the site allows residents to transition into care, and keep their friendships and connection with the Fox Hills community.

The linear parkland along the western boundary of the site provides significant amenity for residents, and it’s generous dimension allows boundary buffer planting to provide a green edge to the park.



Significantly improved outdoor terraces to the club enjoy outdoor vistas

Park area directly opposite the Porte Cochere provides expansive green outlook for this active entry area

Avenue of broad canopy trees provide tree lined building frontage

Central amenities area open to Porte Cochere, and to terraces facing the parkland to the west

Generous open space allows for parkland and also boundary tree and shrub planting



Precinct plan

Design Imagery



Integrated Projects



SITE IMAGE  
Landscape Architects

Fox Hills Golf Club  
Landscape Concept

Client:  
Architect / Urban Planner  
Site Image Job Number:

Fox Hills Golf Club  
Altis Architecture  
SS20-4515

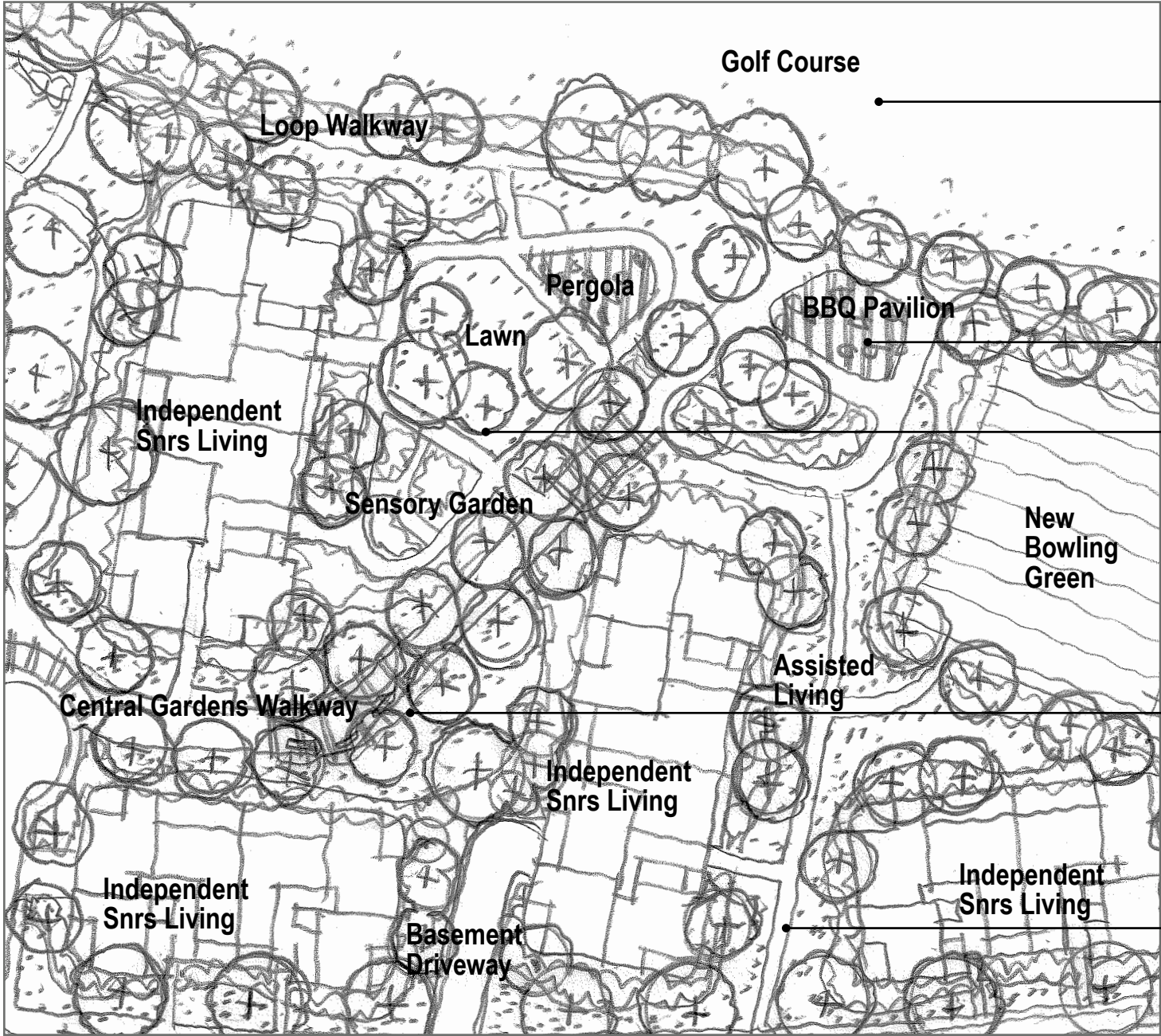
Drawing Number:  
Issue:  
Date: 16.03.2021



3. 'Wellness Parkland' Common Open Space - South



The 'Central Gardens Walkway' is a significant spine of open space, providing a landscape corridor to access residences that is separate to the roadway. This walkway benefits from the series of significant common open space parks that face east and overlook the golf course. The walkway commences with a communal BBQ pavilion. The first of the common garden areas features a sensory garden, broad lawns, a pergola seating area, and circular walkway to a perimeter garden.



Precinct plan

- Adjusted golf course designed to have safe offset from residences and garden areas
- Large community BBQ pavilion provides meeting point and events area for residents
- The series of 'Wellness Gardens' provides a variety of different landscape character spaces, each with broad lawns, pergola and perimeter walkway with seating
- The central walkway spine provides the principal residential walkways, with open spaces along it's length
- The Loop Walkway around the site perimeter crosses the southern end of the site through this open space link.



Design Imagery



Integrated Projects



SITE IMAGE  
Landscape Architects

Fox Hills Golf Club  
Landscape Concept

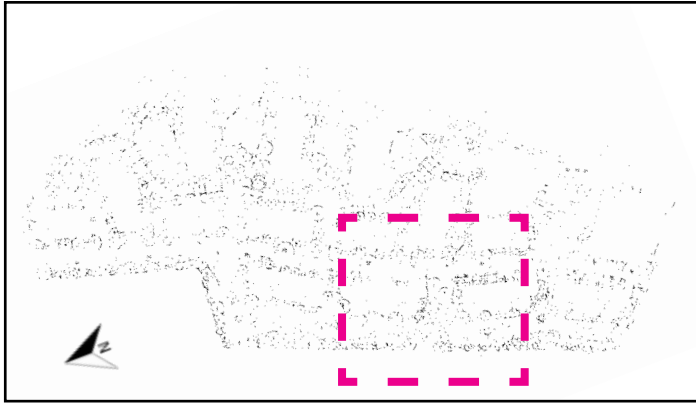
Client:  
Architect / Urban Planner  
Site Image Job Number:

Fox Hills Golf Club  
Altis Architecture  
SS20-4515

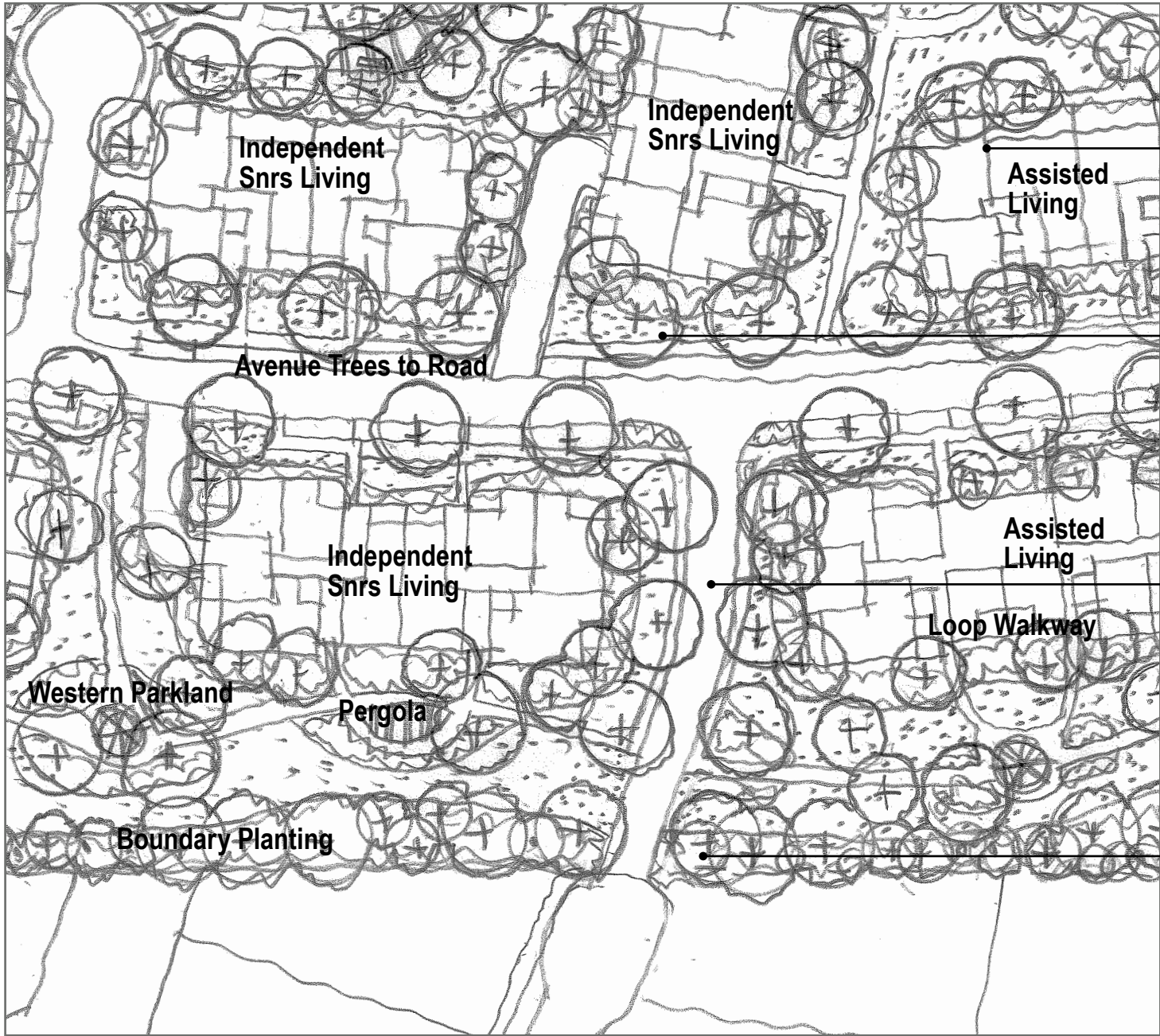
Drawing Number:  
Issue:  
Date: 16.03.2021



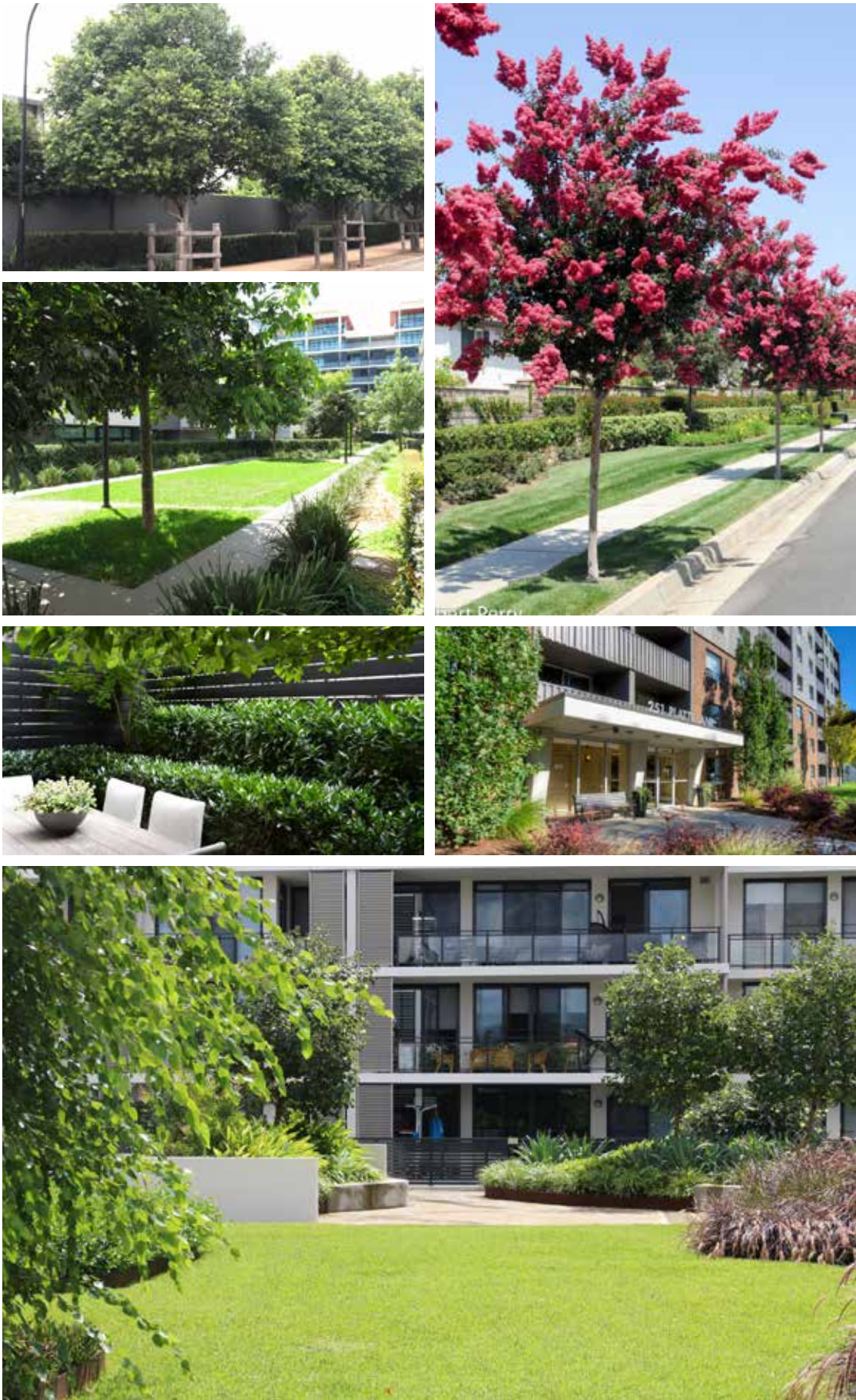
4. Western Site Entry & Independent Seniors Living



The western entry is from Oakwood Road, and will be marked with an entry gateway set inside the site, to allow creation of a lush garden arrival threshold. The entry road traverses the Western Parkland lawns, and the perimeter loop walkway crosses the roadway at a marked crossing. The road has an avenue of broad canopy trees, flanked by residential buildings where it junctions with the central access roadway.



Precinct plan



Design Imagery



Integrated Projects



SITE IMAGE  
Landscape Architects

Fox Hills Golf Club  
Landscape Concept

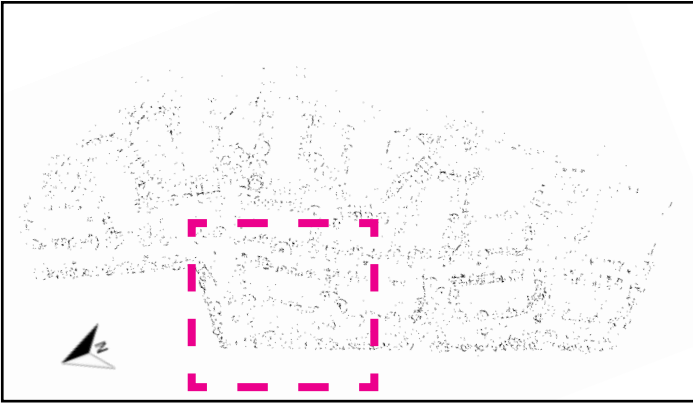
Client:  
Architect / Urban Planner  
Site Image Job Number:

Fox Hills Golf Club  
Altis Architecture  
SS20-4515

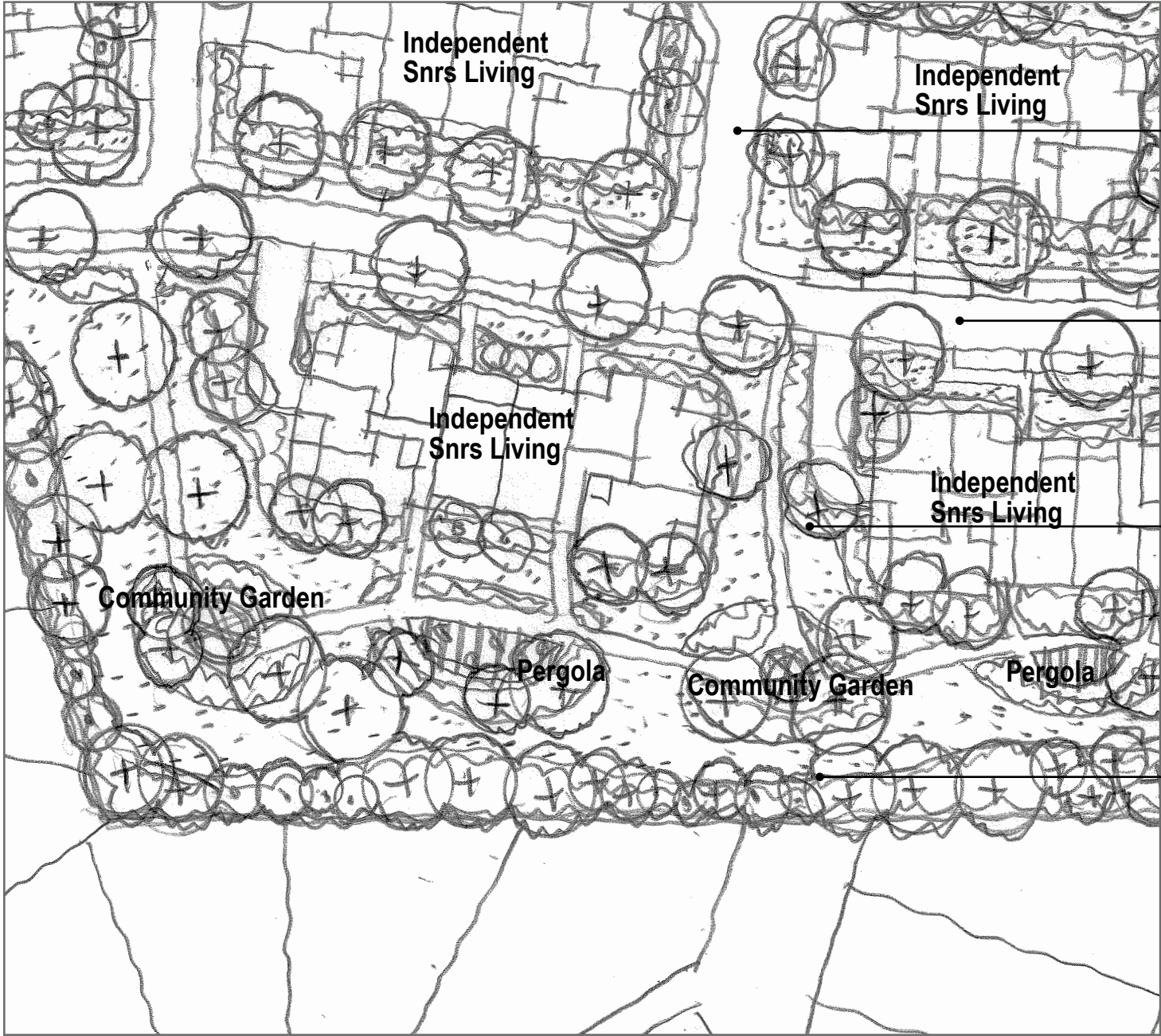
Drawing Number:  
Issue:  
Date: 16.03.2021



5. Western Open Space Corridor and Loop Walkway

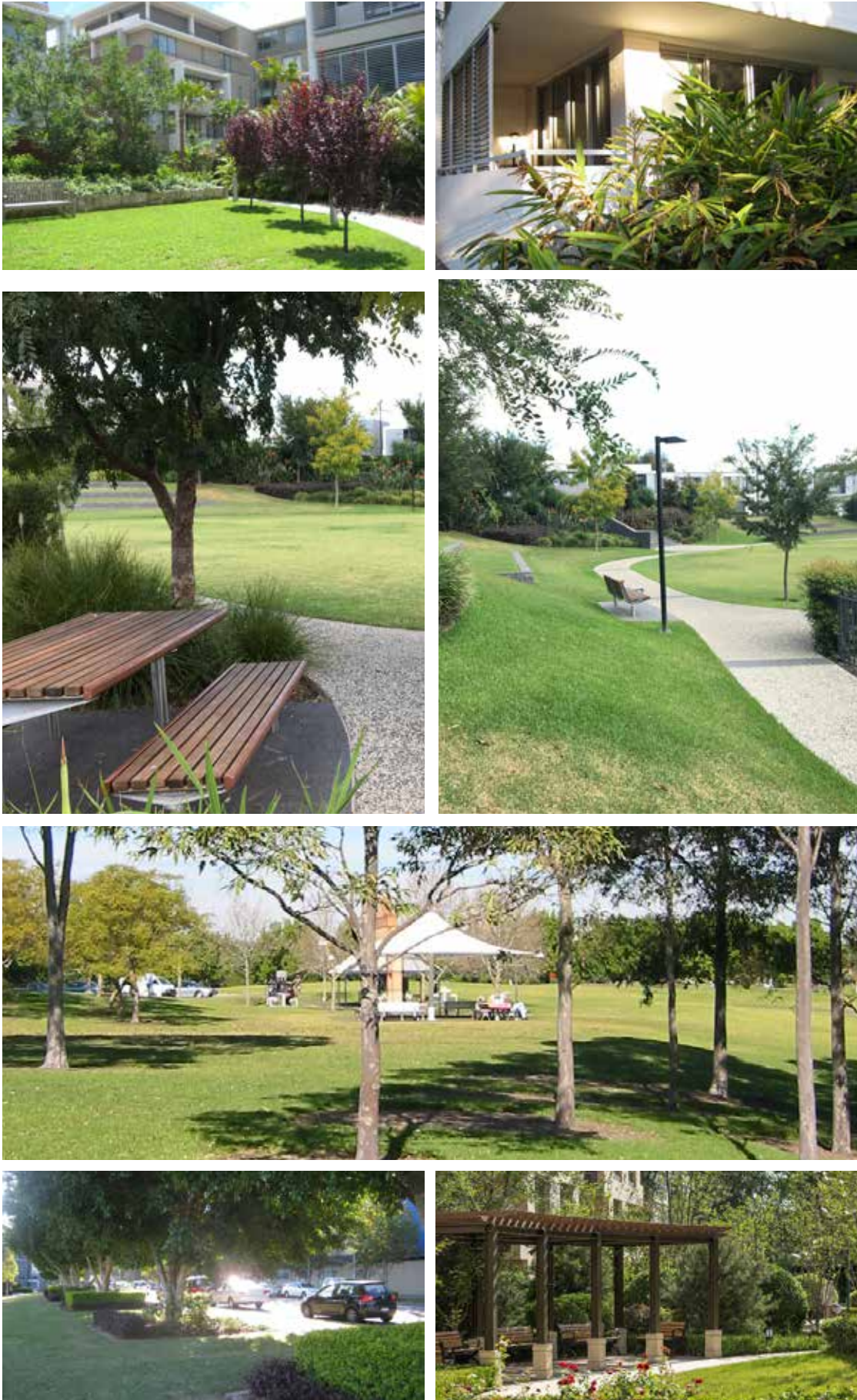


The Western Parkland open space continues north and turns east to meet the central roadway. The site loop walkway follows the open space, and then continues north linking with the golf course edge walkway to be a continuous link around the site perimeter. The loop walkway is marked by pergolas and BBQ pavilions at regular intervals. Community Gardens, seating, interpretive sculptures, and other landscape features are distributed along it's length.



Precinct plan

- Residential spur roads provide cul-de-sac access to golf course facing residences, and distinct street address and setdown
- Avenue of broad canopy trees provide tree lined residential building frontages
- Landscape open spaces provide a series of walkway links across the site
- Generous open space allows for parkland and also boundary tree and shrub planting



Design Imagery



Integrated Projects



SITE IMAGE  
Landscape Architects

Fox Hills Golf Club  
Landscape Concept

Client:  
Architect / Urban Planner  
Site Image Job Number:

Fox Hills Golf Club  
Altis Architecture  
SS20-4515

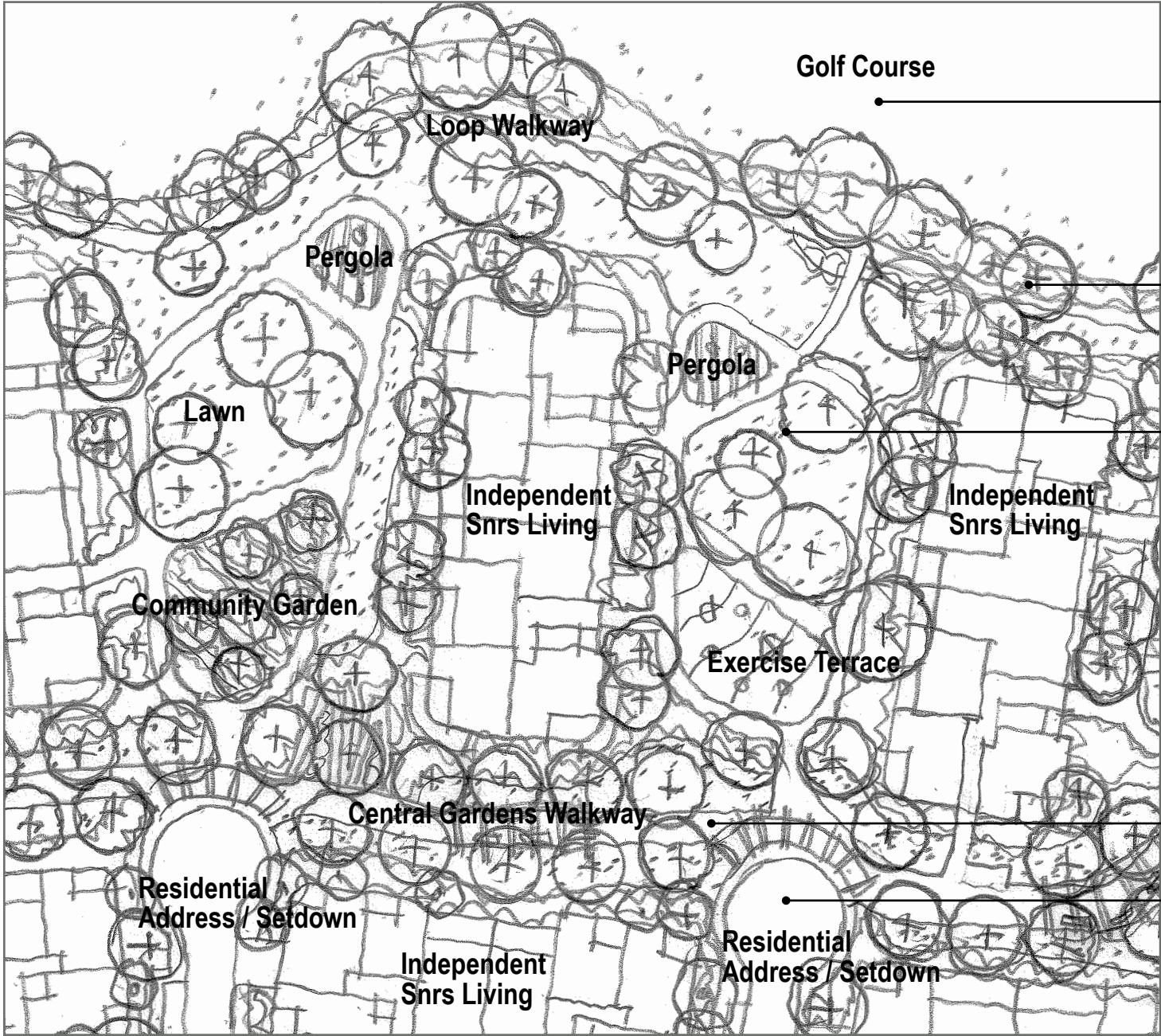
Drawing Number:  
Issue:  
Date: 16.03.2021



6. 'Wellness Parkland' Common Open Space - North



The series of 'Wellness Parklands' are large open space areas that face east and overlook the golf course, and provide green outlook from the residential buildings north and south of each park area. Perimeter garden walkways around central lawn areas visit numerous seating nodes, an outlook pergola, and feature activity area. The two parks shown below feature an Exercise Terrace and Community Garden for growing vegetables and sharing garden club activities.



Adjusted golf course designed to have safe offset from residences and garden areas

Loop walkway along the golf course edge provides significant amenity

The series of 'Wellness Gardens' provides a variety of different landscape character spaces, each with broad lawns, pergola and perimeter walkway with seating

The central walkway spine provides the principal residential walkways, with open spaces along it's length

Cul-de-Sac roadways provide residential address and access to golf course facing residences



Precinct plan

Design Imagery



Integrated Projects



SITE IMAGE  
Landscape Architects

Fox Hills Golf Club  
Landscape Concept

Client:  
Architect / Urban Planner  
Site Image Job Number:

Fox Hills Golf Club  
Altis Architecture  
SS20-4515

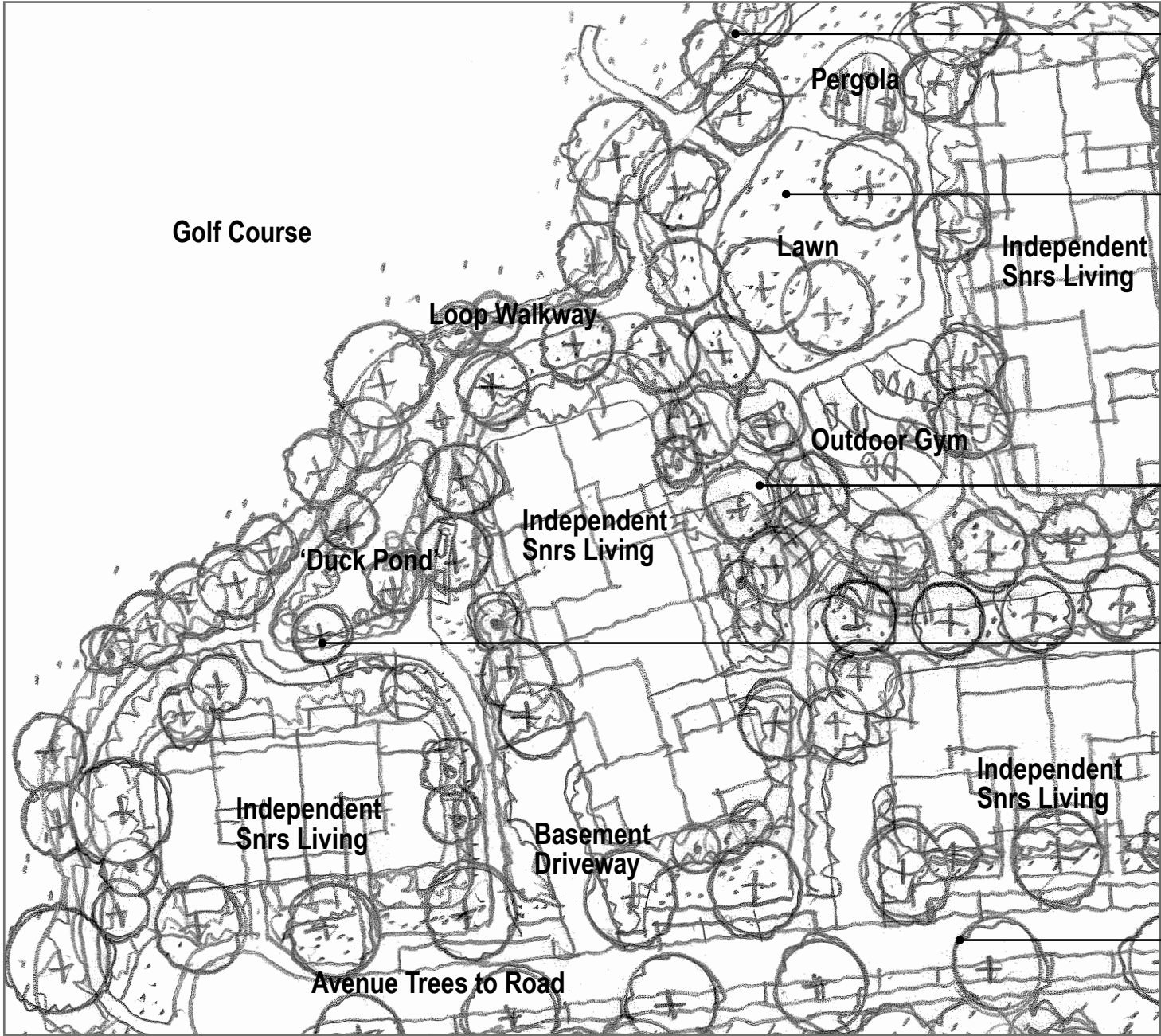
Drawing Number:  
Issue:  
Date: 16.03.2021



7. Duck Pond and Loop Walkway Golf Interface



The Central Gardens Walkway changes direction at it's northern end, heading east to the golf course edge, engaging directly with the most northern Wellness Garden, and it's outdoor gym and lawns., The walkway then finishes at the proposed 'Duck Pond' landscape feature area. The duck pond provides a worthy turning point for pedestrians to return back along the central pathway, or to join the perimeter walkway loop along the golf course edge, or to the Western Parkland.



Precinct plan

- Loop walkway along the golf course edge provides significant amenity
- The series of 'Wellness Gardens' provides a variety of different landscape character spaces, each with broad lawns, pergola and perimeter walkway with seating
- The central walkway spine provides the principal residential walkways, with open spaces along it's length
- The Duck Pond provides a substantial landscape feature as an end-point destination to the central walkway, and site loop walkway.
- Avenue of broad canopy trees provide tree lined residential building frontages



Design Imagery



Integrated Projects



SITE IMAGE  
Landscape Architects

Fox Hills Golf Club  
Landscape Concept

Client:  
Architect / Urban Planner  
Site Image Job Number:

Fox Hills Golf Club  
Altis Architecture  
SS20-4515

Drawing Number:  
Issue:  
Date: 16.03.2021